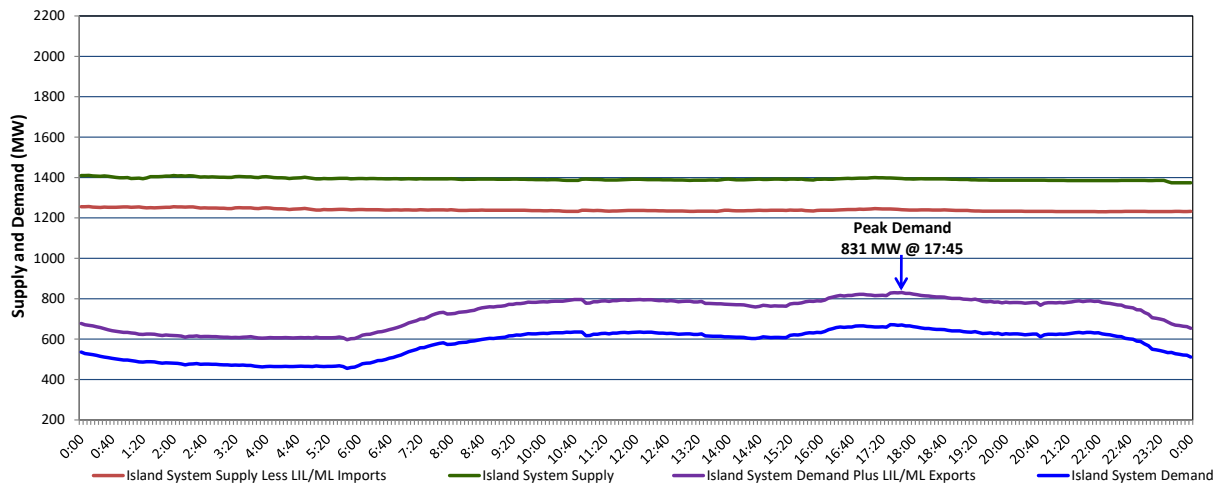


Newfoundland Labrador Hydro (NLH) Supply and Demand Status Report Filed Friday, July 15, 2022

Section 1 Island Interconnected System Supply, Demand & Exports Actual 24 Hour System Performance For Thursday, July 14, 2022



Supply Notes For July 14, 2022

1,2

- A As of 0857 hours, April 04, 2022, Holyrood Unit 3 unavailable due to planned outage (150 MW).
- B As of 1327 hours, May 08, 2022, Bay d'Espoir Unit 6 unavailable due to planned outage (76.5 MW).
- C As of 2351 hours, May 28, 2022, Holyrood Unit 2 available but not operating 150 MW (170 MW).
- D As of 0800 hours, June 08, 2022, Holyrood Unit 1 unavailable due to planned outage (170 MW).
- E As of 1422 hours, June 19, 2022, Granite Canal Unit unavailable due to planned outage (40 MW).
- F As of 0210 hours, July 03, 2022, Bay d'Espoir Unit 5 unavailable (76.5 MW).
- G As of 0930 hours, July 12, 2022, Upper Salmon Unit unavailable due to planned outage (84 MW).

Section 2 Island Interconnected Supply and Demand

Fri, Jul 15, 2022	Island System Outlook ³	Seven-Day Forecast	Temperature (°C)		Island System Daily Peak Demand (MW)	
			Morning	Evening	Forecast	Adjusted ⁷
Available Island System Supply: ⁵	1,403 MW	Friday, July 15, 2022	17	19	840	840
NLH Island Generation: ^{4,8}	925 MW	Saturday, July 16, 2022	15	18	660	660
NLH Island Power Purchases: ⁶	100 MW	Sunday, July 17, 2022	19	19	720	720
Other Island Generation:	225 MW	Monday, July 18, 2022	18	18	745	745
ML/LIL Imports:	153 MW	Tuesday, July 19, 2022	17	21	755	755
Current St. John's Temperature & Windchill:	13 °C	Wednesday, July 20, 2022	18	17	740	740
7-Day Island Peak Demand Forecast:	840 MW	Thursday, July 21, 2022	18	15	745	745

Supply Notes For July 15, 2022

3

- Notes:
1. Generation outages for running and corrective maintenance are included. These are not unusual for power system operations. They generally do not impact customer supply. The power system operators schedule outages to system equipment whenever possible to coincide with periods when customer demands are low and sufficient supply reserves are available. However, from time to time equipment outages are necessary and reserves may be impacted.
 2. Due to the Island system having no synchronous connections to the larger North American grid, when there is a sudden loss of large generating units there may be a requirement for some customer's load to be interrupted for short periods to bring generation output equal to customer demand. This automatic action of power system protection, referred to as under frequency load shedding (UFLS), is necessary to ensure the integrity and reliability of system equipment. Under frequency events have typically occurred 5 to 8 times per year on the Island Interconnected System and the resultant customer load interruptions are generally less than 30 minutes. With the activation of the Maritime Link frequency controller during the winter of 2018, UFLS events have occurred less frequently.
 3. As of 0800 Hours.
 4. Gross output including station service at Holyrood (24.5 MW) and improved NLH hydraulic output due to water levels (35 MW).
 5. Gross output from all Island sources (including Note 4).
 6. NLH Island Power Purchases include: CBPP Co-Gen, Nalcor Exploits, Rattle Brook, Star Lake, Wind Generation and capacity assistance (when applicable).
 7. Adjusted for curtailable load, market activities and the impact of voltage reduction when applicable.
 8. Due to limitations inherent in the design of combustion turbines, the output of combustion turbines may be reduced in the event that ambient temperatures exceed the threshold

Section 3 Island Peak Demand Information Previous Day Actual Peak and Current Day Forecast Peak

Thu, Jul 14, 2022	Actual Island Peak Demand ⁹	17:45	831 MW
Fri, Jul 15, 2022	Forecast Island Peak Demand		840 MW

Notes: 9. Island Demand / LIL / ML Exports (where applicable) is supplied by NLH generation and purchases, plus generation owned and operated by Newfoundland Power and Corner Brook Pulp & Paper (Deer Lake Power, DLP).